

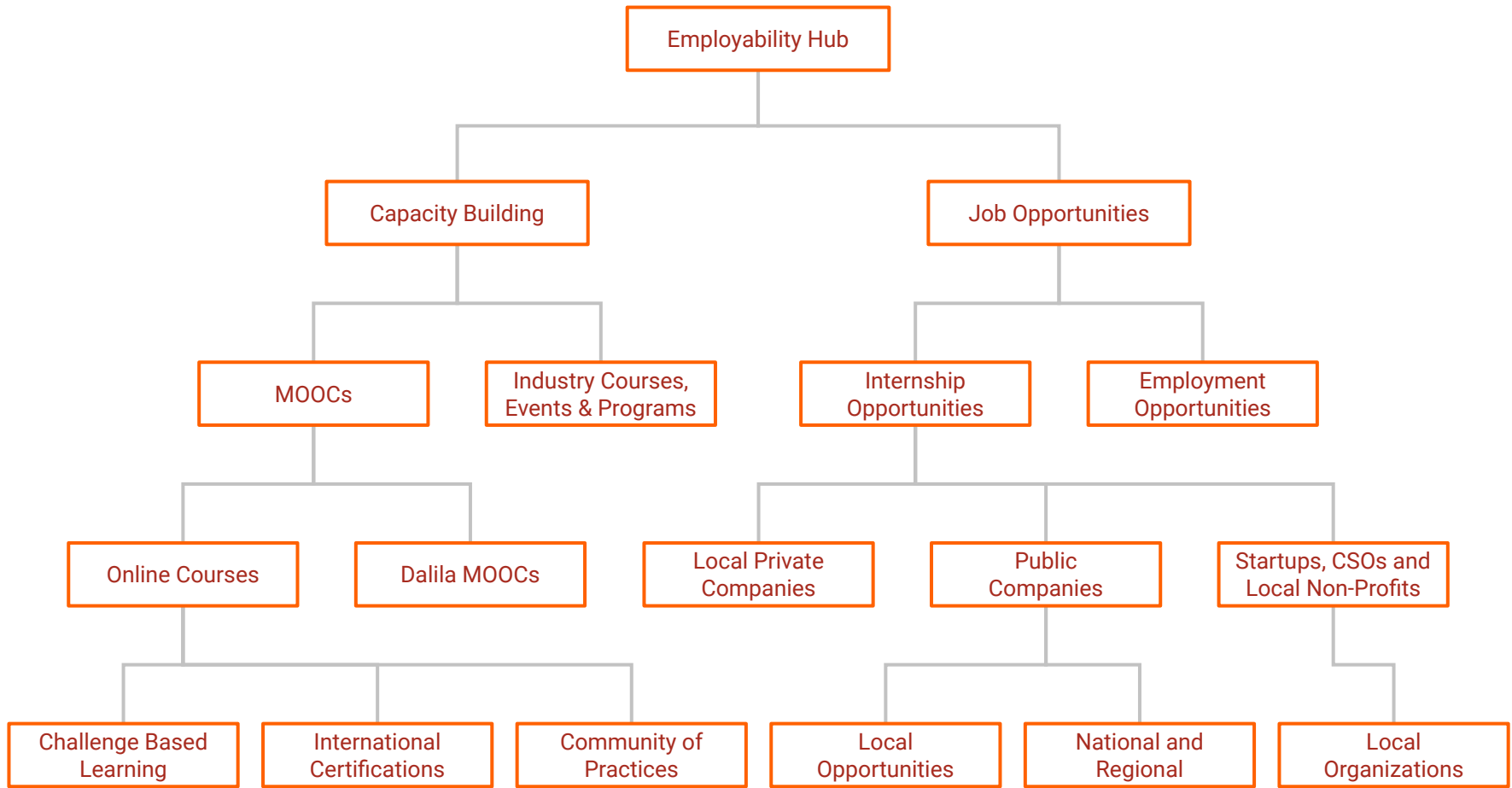
Employability Hub

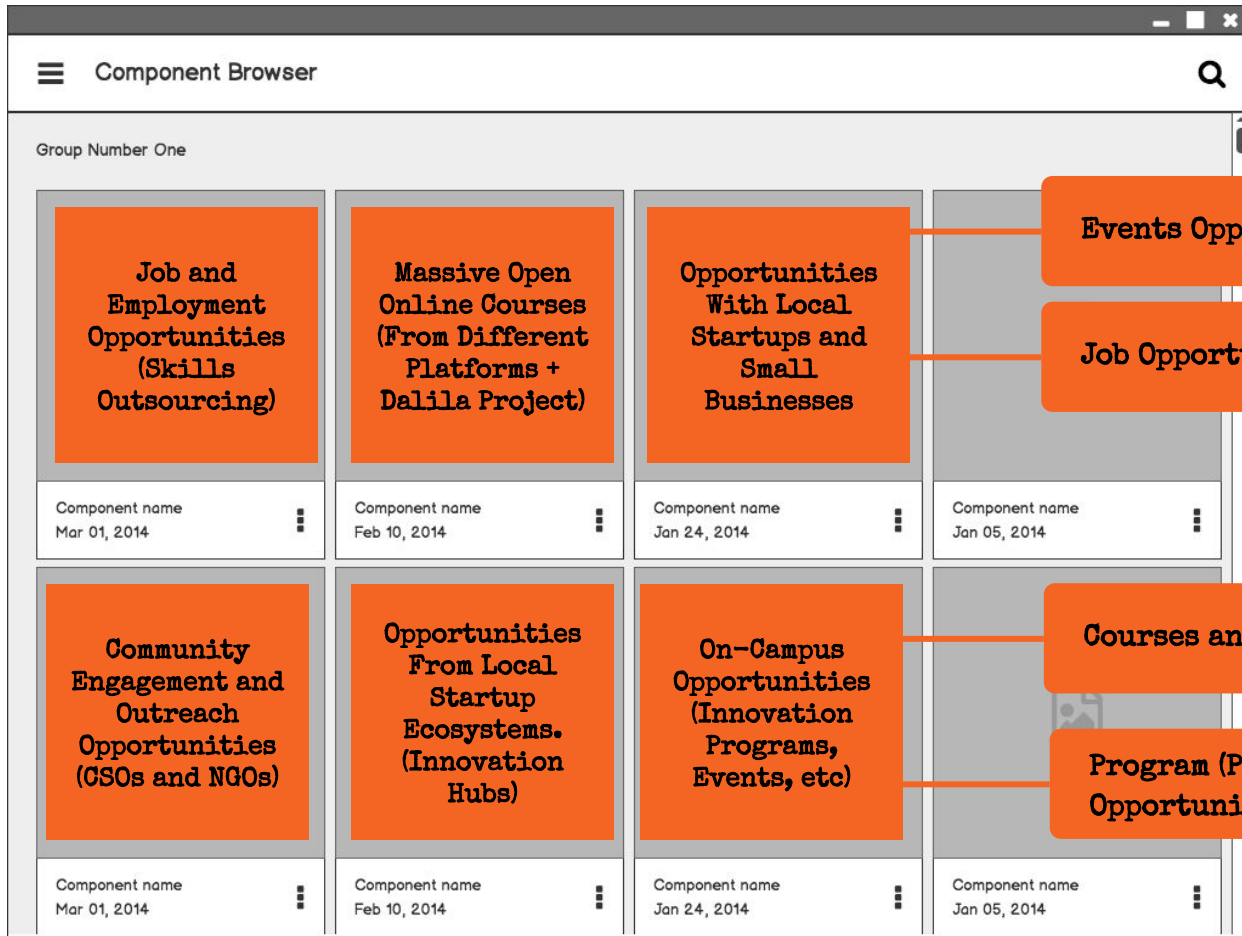
Wireframe and Paper Prototype Presentation

Sahara Ventures, CEO | Jumanne Mtambalike



This document and its contents have a Creative Commons license: [CC BY SA](#). Anyone is free to use or share the content for any legal purpose, not for commercial purposes, as long as any derivative work is shared under the same license and gives proper credit to: "Sahara Consulting, part of Sahara Ventures". Discover more about Creative Commons licenses [here](#).





Employability Hub Sustainability Model

<p>Key Partners </p> <p>Public Agencies Private Companies Development Partners Research Agencies Academic Institutions Innovation Hubs Business Associations CSOs and Non-Profits International Companies and NGOs.</p>	<p>Key Activities </p> <p>Posting Contents Sharing Opportunities Customer Engagement</p>	<p>Value Propositions </p> <p>Access to Job Opportunities Access to a Community Access to Courses Access to Challenges Access to Projects Access to Different Skills Development Programs..</p>	<p>Customer Relationships </p> <p>High Quality Programs Bespoke Support Customer-Centered Contents High Quality Partnerships</p>	<p>Customer Segments </p> <p>Primary Customers Students Lecturers</p> <p>Secondary Customers Researchers</p>
<p>Cost Structure </p> <p>Setting Up Costs (Feasibility, etc) Implementing Costs (Human and Financial Resources) Other Related Costs</p>		<p>Revenue Streams </p> <p>Partner Support Outsourcing Services University Financing</p>		
<p>Key Resources </p> <p>Virtual Platform Contents Resources Human Resources Financial Resources</p>		<p>Channels </p> <p>Students Networks Traditional and Social Media Agencies (SIDO, VETA, etc)</p>		



Thanks!

Any questions?

You can find me at | ceo@saharaventures.com